



# NEXTec

MADE IN ITALY



## ALARM SYSTEMS



# NEXTtec



NEXTtec projects and manufactures efficient security systems combining high performance level to a simple and practical used, in order to ensure easy installation and intuitive programmes for specialists and a simplified management for all users.

## EXPERIENCE IN THE SERVICE OF SECURITY

NEXTtec: a company composed of a tight-knit staff with significant and specific technical skills acquired in the security industry, uses 35 years of experience gained by continuous care in search of increasingly innovative solutions, responding quickly to the industry development and trade requests.



## A NAME TO WARRANT THE MADE IN ITALY

NEXTtec projects and manufactures entirely in Italy efficient security systems, developing in complete independence all steps of the process: hardware, software and firmware of electronic cards are indeed subjected to a strict quality control, ensuring excellent performance through the adoption of sophisticated equipment and monitoring tools.



## CAREFUL WITH NEEDS CUSTOMERS

NEXTtec ensures continuity in customer relations, offering customized solutions, thanks to the extreme versatility of its product that can be adapted to any type of installation maintaining nevertheless high efficiency over the time.

Following this purpose, NEXTtec is able to satisfy any specific customer's requirements.

## THE ASSISTANCE THAT YOU'RE LOOKING FOR

NEXTtec guarantee continuous assistance, right from the first phase of testing, thanks to the intervention of an expert always available, ables to manage promptly to every problems. Assistance, also spreads in planning of refresher courses, in order to ensure consistently high performance levels, matching up to any type of security installation. Also it ensures an accurate after-sales service at any time, giving support and advices, constantly on the various needs of customers.



The NEXTtec mission is to provide not just customized and quality products, but a simple, fast and intuitive work method for technician, essential to operate in safety and tranquillity.





# SUPERLINK SMART SYSTEM

**Wire/wireless control panel with optional GSM card. Innovation, versatility and integration of NEXTEC systems all in one product. Created to guarantee continuous connection and interaction with users wherever they are.**

System heart is the wireless/wire control panel, with 2 serial Bus RS 485 and supervision of all wireless/wired peripheral devices.

## TECHNICAL FEATURES

- Big industrial or residential applications
- 8 inputs expandable up to 120 (56 cable + 64 radio devices) or only 120 wired inputs plus 8 technical inputs
- 8 Programm/Areas + Gong
- 16 radio controls 4 channels
- Divided on 2 serial bus up to 24 control devices such as: up to 4 LCD, TOUCH SCREEN Keypads and 8 transponder reader keys.
- 64 key codes
- GSM and PSTN Telephone dialer Card
- 5 Programming outputs Expandable up to 75 wired Inputs: alarm, remote control, fault and block
- Data Storage 500 Events recording
- Check residual credit card

## CONTROL DEVICES

- Setting, Activation/Deactivation with Touch screen Keypad, with icon menu and graphic maps and with LCD Keypad with blu display backlight, with transponder and vocal reply
- Radio Control NRC500TX FM Remote on-demand system equipped with 4 channels individually programmable up to 8 functions (on / off, panic, robbery and aid) available for RFID Key reader
- **Two Way Remote control**, check status button, 3 channels

## Maximum reliability of remote management and remote communication

- GSM / GPRS to remote managing and controlling system through: Proprietary software, E- link, for local and remote system programming directly from PC Software Android Application Linkjet and iOS: Remote Control management of main functions by SMS
- The GSM communicator card sends the alarms as vocal messages, digital protocol communication for remote surveillance (contact ID), SMS messages.
- TCP/IP Interface. Control Panel connected to LAN or to an ADSL Modem
- USB Back Up

## INNOVATION FUNCTIONS

**Anti-jamming:** Designed to make harmless radio noise devices that blinding the GSM signal. The Antijammer software preserve the correct alarm system working.

## NEXT-CLOUD:

Improves the interactivity level of remote control through on-demand process.

**LINKJET App** available for android and iOS devices increases and simplifies the system management

## SMS FUNCTIONS

- Check system state Activate/Deactivate, Activation/Deactivation Inputs, Including/ excluding Inputs, outputs and Areas
- Activate/Deactivate home automation
- Automatic generation and sending text messages to each type of alarm and signalling clear sensor localization: Users receive SMS that identifies the alarm zone.

**PHOTOCAPTURE:** During an alarm in progress, NEXTCloud sends to user 10 frame through a camera associated with a sensor.



SUPERLINK control panel	WIRED SYSTEM	WIRED/ WIRELESS SYSTEM	SUPPORTS GSM MODUL	CLOUD ANDROID AND IOS APP	SUPPORTS BIDIRECTIONAL RADIO CONTROL	SUPPORTS EXPANDABLE CARD	LAN
120 P80	•	•	•	•	•	•	•
120 L50	•	•	•	•	•	•	•
120 L60/L100	•	•	•	•	•	•	•



EXPANDABLE INPUT



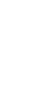
PART SETTING



COMMANDS SMS



APPLICATION ANDROID AND IOS





# LINK80 SMART SYSTEM

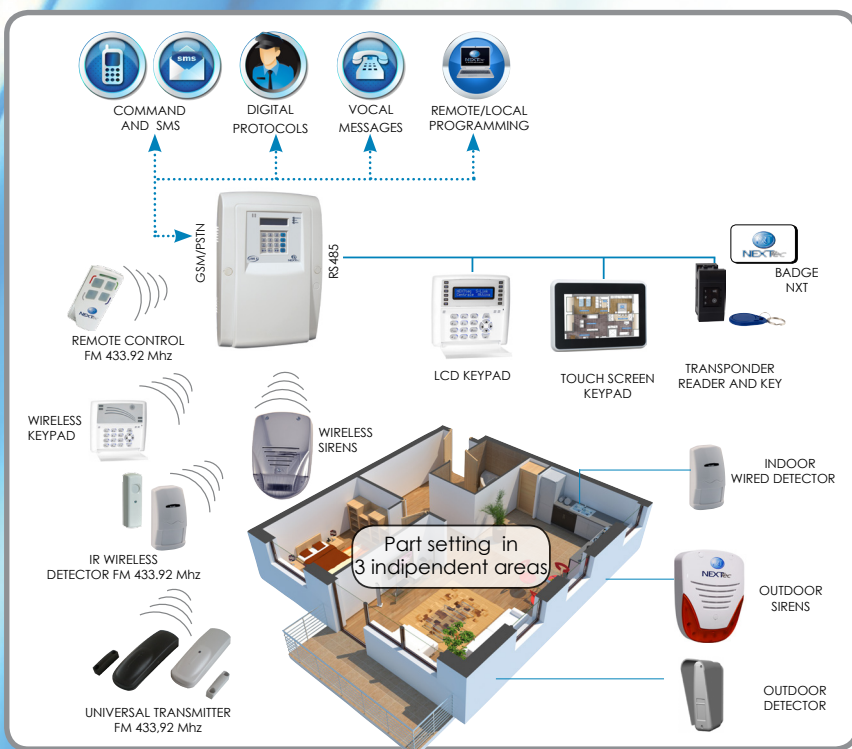


## WIRE/WIRELESS CONTROL PANEL WITH PSTN or GSM INTEGRATED

**LINK80 RX is a system that assures the best of wire system reliability and the best of wireless system versatility and a safe remote control management.**

It is composed by wire/wireless control panel and PSTN or GSM telephone communicator and managing digital communication protocols "Contact ID". Moreover, GSM permits remote control management of main functions through SMS such as consulting to guarantee maximum communication and interaction wherever user is.

**PHOTOCAPTURE:** During an alarm in progress NEXTCloud sends to user 10 frame through a camera associated with a sensor.



## TECHNICAL FEATURES

- Up to 48 Wireless inputs, all delayed/excluded by SMS
- 8 wired Inputs expandable up to 32
- 3 Programming areas + GONG
- 5 Programming outputs expandable up to 23: alarm, remote control, fault and block
- Data Storage 500 Events recording
- Check residual credit card
- 16 Control units/key codes, 1 LCD TOUCH SCREEN keypad and up to 8 reader keys

## CONTROL DEVICES

- Setting, Activation/Deactivation with **Touch screen Keypad**, with icon menu and graphic Maps
- Activation/Deactivation with **TWO-WAY WIRELESS LED Keypad**, with transponder
- Setting, Activation/Deactivation with **LCD Keypad** with blu display backlight, with RFID and vocal reply
- **Remote Control FM** equipped with 4 channels individually programmable up to 8 functions: Armed/disarmed system, Compute Outputs (Panic/Home Automation), Simulate Inputs (Robbery/medical aid)
- **Two Way Remote control**, check status button, 3 channels
- **RFID Key reader**

## Maximum reliability in remote management and remote communication

- GSM/GPRS to remote managing and controlling system from through: Proprietary software, E-link, for system local and remote programming directly from PC
- Software Android and iOS Application: Remote Control management of main functions by SMS

**NEXT-CLOUD:** Improves the interactivity level of remote control through on-demand process.

## SMS FUNCTIONS

- Check system state Activate/Deactivate, Activation/Deactivation Inputs
- Including/excluding Inputs, outputs, Areas
- Activate/Deactivate home automation
- Automatic generation and sending text messages to each type of alarm and signalling
- Clear sensor localization: Users receive SMS that identifies the alarm zone

## Anti-jamming function

- Anti-jamming: Designed to make harmless radio noise devices that blinding the GSM signal.







## TECHNICAL FEATURES

- 4 wired inputs
- Up to 32 inputs/wireless contacts
- Part setting in 2 zones
- 7 Supervisor technical inputs
- Quick and easy programming thanks to practical built-in keyboard
- The control panel is equipped with speaker and radio status viewer (optional) for signaling/indication of activating/deactivating system to ensure greater security to user on the system status.
- 4 programmable outputs, of which 1 relé output as alarm, remote controls, fault and block
- Up to 16 radio controls or led radio keypads
- Up to 8 key codes from on board keypad
- Historic file: up to 500 events
- Allocated in reduced ABS case, dimension: 195X215X63 mm

## CONTROL DEVICES

- Setting, Activation/Deactivation with **LCD Keypad** with blu display backlight, integrated in control panel
- Activation/Deactivation with **LCD Keypad, with RFID and vocal reply**
- Up to 16 **remote controls** 4 Channels: it has 4 buttons to which you can associate up to 8 independent functions to handle: Armed/disarmed system, Compute Outputs (Panic / Home Automation) Simulate Inputs (Robbery/Emergency Physician)
- **Two Way Remote control**, check status button 3 channels
- **Two-way LED Keypad**

### Maximum reliability of remote management and remote communication

- GSM / GPRS to remote managing and controlling system through: Proprietary software, **E- link**, for local and remote system programming directly from PC. Software Android Application Linkjet and iOS: Remote Control management of

- The GSM communicator card sends the alarms as vocal messages, digital protocol communication for remote surveillance (contact ID), SMS messages.

**NEXT-CLOUD:**

**NEXT: CLOUD:**  
Improves the interactivity level of remote control through on-demand process.

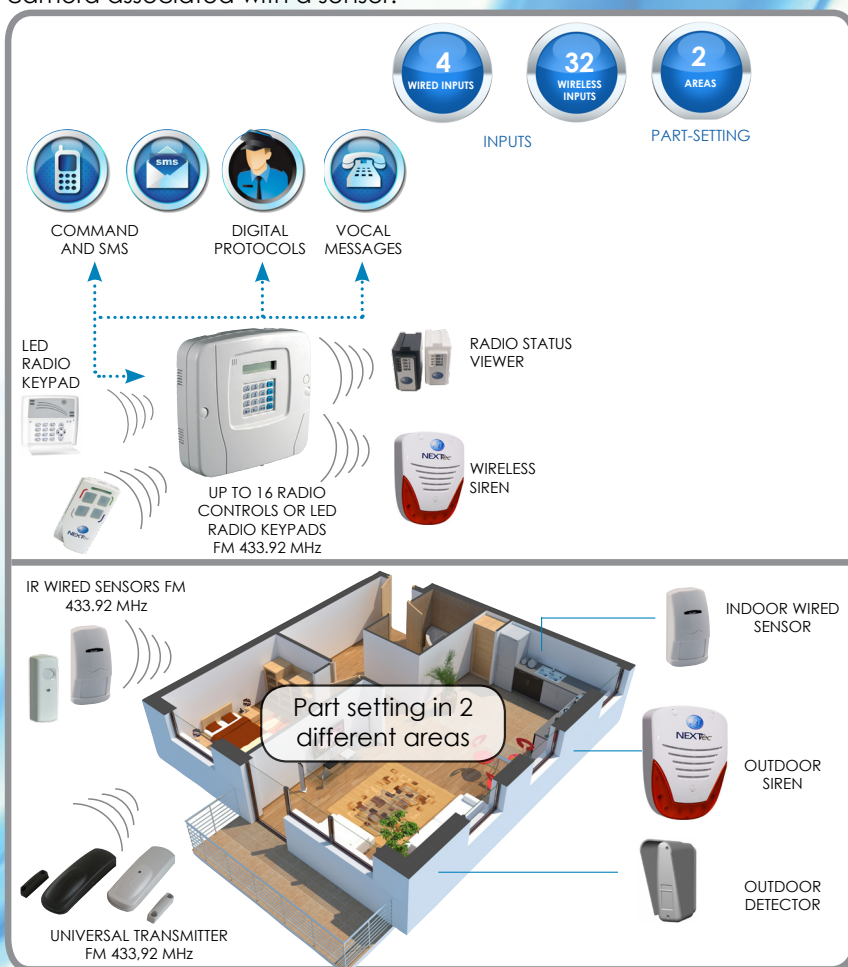
## SMS FUNCTIONS

- Check system state Activate/Deactivate, Activation/Deactivation Inputs
- Including/excluding Inputs, outputs, Areas
- Activate/Deactivate home automation Automatic generation and sending text messages to each type of alarm and signalling
- Clear sensor localization: Users receive SMS that identifies the alarm zone

### Anti-jamming function

- Anti-jamming: Designed to make harmless radio noise devices that blinding the GSM signal.

**PHOTOCAPTURE:** During an alarm in progress, NEXTCloud sends to user 10 frame through a camera associated with a sensor.

EXPANDABLE  
INPUTS

## PART SETTING

## COMMAND AND SMS APPLICATION ANDROID AND iOS

DIGITAL  
PROTOCOL

## VOCAL MESSAGES

ANTI-JAMMING  
FUNCTION

- REMOTE MANAGEMENT
- GPRS



# CONTROL SYSTEM FOR ALARMED DOORS



It is composed by one or more control and signal units and is possible connect one or two activation devices that control the door.

System is composed by 1 up to 8 control and signal units.

Through a remote keypad is possible supervise the system and manage the activation/deactivation of every control or signal unit.

it is possible customize the siren cover with message: Warning Alarmed door!

## FEATURES

**NCPS80:** Control unit for security door. Inputs: control inputs, 24h input. Acoustic Power 103dB to 1m.

Self-protection for removal and break: ABS bottom, polycarbonate cover. Led Lighting to high intensity to signal the unit status as activation, alarm and fault: Power supply integrated. Colour anthracite and white

**NTS22:** Control and manage keypad for control system of security doors NCPS80. The keypad can manage up to 8 NCPS80 Units. 2x16" display.

ABS case. White and anthracite colour Dimension:122 x 132 x 35mm.

**NCL20:** Reader Key, Ticino Magic, ABS Case colors: anthracite, white

**NCP20:** Electronic key for NLC20 reader key. not codified. Programming through control panel NCPS80.







## LINKCLOUD: ANDROID AND iOS APPS



**LINKCLOUD is an application for Android and iOS smart phones and tablet, specifically designed to allow systems remote control management, sending and receiving automatic SMS commands, in an easy and fast way, in order to simplify the use both installer and user. Also it permits directly connection with NEXTcloud, clicking on the specific icon.**

- Thanks to the interactivity of software based on two-way communication, it's possible a prompt and secure exchange of commands in a practical way, through intuitive graphical interface with icons.
- The software has a dedicated used, sharing the program for installer and user to monitor the system by issuing the following commands: On/Off and Status Check: Plant, inputs, outputs and zones, file archiving historical events
- Technological functions and applications for home automation
  - Changing phone numbers
  - Checking the remaining credit
  - Due Date Sim Card
- LINKCLOUD manages an unlimited number of remote system associating a name for each ID: Home System, sea home System, office, etc ..



## NEXTCLOUD: REMOTE MANAGEMENT

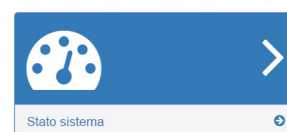
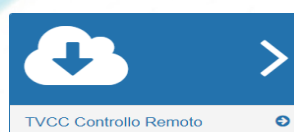


**NEXTCloud permits the remote control management of an unlimited numbers of control panel by installer and user too.**

At first the installer account is necessary to create user accounts and to associate the NEXTtec's control panels to the accounts.

NEXTCloud is permanently connected to control panel in order to monitor the state plant in real time, showing clearly and accurately on the monitor page:

- The connected devices
- Input status (open / closed and on alarm)
- Areas status (active / inactive)
- Management of technology functions and home automation
- Ordered database for data storage management, historical events and downloading.
- Status of faults (low battery, power failure, fault, etc. ..)
- **Photo Capture:** During an alarm in progress NEXTCloud sends to user 10 frame through a camera associated with a sensor.
- The screen «Scenarios» shows the controls need in order to start or stop the scenarios in progress, programmed on Superlink control panel such us lights or shutters control
- **Notices:** It's possible set up the system in order to send notices about events in progress selected (Sending notice through e-mail or Web Push service)





# NEXTtec

MADE IN ITALY



NEXTtec SRL - Via Ivrea 71/B - 10098 Rivoli (TO) ITALY  
Tel. +39.0119539214 - Fax +39. 0119595318  
[www.nexttec.it](http://www.nexttec.it) • [info@nexttec.it](mailto:info@nexttec.it)